

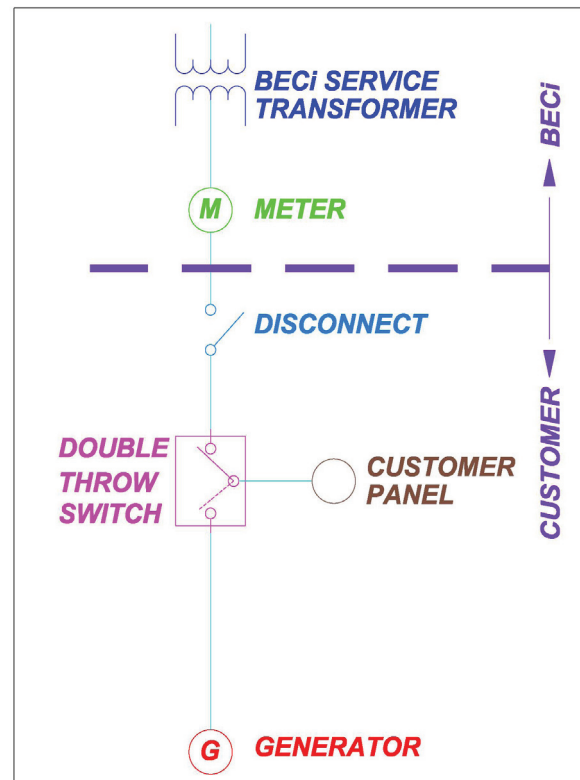
Additional Safety Tips

- Never operate a generator indoors or in a confined area where people or animals can be exposed. Obstructing ventilation can cause overheating and produce carbon monoxide poisoning.
- Keep animals and children away from the generator while it is operating.
- Do not operate the generator in rain, snow, or flooded conditions. Water and electricity don't mix!
- Never fill the fuel tank while the engine is running. Gas fumes can be ignited by a hot muffler, hot engine, or an electrical spark. Always allow the engine to cool completely before refueling. Store fuel in proper containers.
- Never turn off a generator with a load connected to it.
- Make sure the generator is properly sized for the load. The total electric load connected to your generator should not exceed the rating of the generator.
- Always start a generator under no load. Add load after the generator has reached proper operating speed. Start largest load first.
- Always consult the manufacturer's instructions for safe operation of the generator.

If you have questions please call or contact your local electric cooperative:

Beauregard Electric Co-op, Inc.
1010 East First Street
P.O. Drawer 970
DeRidder, LA 70634
Phone: 337-463-6221
Fax: 337-463-2809
www.beci.org

Diagram of an acceptable hook-up configuration for a portable generator:



Generator Safety

is your responsibility

Look inside for some very important tips from Beauregard Electric Cooperative, Inc.

**Large Enough to Serve,
Small Enough to Care**

Storms create an increased demand for emergency generators. Tornadoes, hurricanes, even the occasional ice storm can also cause major, long-term outage emergencies. The improper use of portable generators can kill you or line personnel trying to restore power. Improper use can also damage or destroy appliances, cause fires, or cause carbon monoxide poisoning.

The safe connection and operation of a portable generator is your responsibility.

GENERATOR HOOK-UP

The electrical hook-up of the portable generator is a very important issue.

Never connect a portable generator directly to your building's electrical system. This can "back-feed" the utility electrical system energizing downed power lines setting up a very dangerous situation. Anyone who comes in contact with an energized, downed power line can be injured or even killed by the power from the portable generator. "Back-feeding" can even energize your neighbor's electrical service.

It is recommended that portable generators only be used to power individual appliances by plugging directly into the generator or with an approved, heavy duty extension cord with a wire gauge adequate for the appliance load. Plugging the appliances directly into the generator is the safest way to use the generator.

If you intend to connect a generator to your building's electrical system, it must be connected through a double-throw, transfer

switch. During an outage, the double-throw, transfer switch can be used to safely disconnect from the co-op's service and connect to the generator. This eliminates any chance of the generator back-feeding into the utility electrical system and injuring or killing a line worker restoring power. A qualified, licensed, electrician should be hired to install a transfer switch in accordance with the National Electrical Code and any local ordinances. (See *Diagram on opposite page.*)

Also, the generator should be properly grounded according to the NEC and the manufacturer's recommendations.

PROPER PREPARATION

Small generators are usually not powerful enough to run your complete household needs. Overloading can cause damage to the generator and appliances. It can also cause a fire hazard. Undersized extension cords can also overheat.

Before purchasing a generator, list all of the appliances and the wattage totals for each that you plan to run. Remember starting loads are often greater; therefore, your generator should be sized to handle this load. For example, a 5,000-watt generator could run four lights, a furnace fan (only), a refrigerator, and a sump pump. Voltage levels may fluctuate from portable generators, which can cause damage to your electrical appliances. Be sure and start the largest motor or appliance first. Don't attempt to speed up the engine for more output. Non-standard voltage and frequency can cause damage.

Don't let a weather disaster turn into a person-

al disaster. If you need an emergency generator and plan to power your home, purchase one now and consult with a qualified, licensed, electrician before using it to power your home.

BECi's line personnel will always work tirelessly to get your power back on as soon as possible. Line work is a dangerous job even in the best of conditions. You can avoid injury to yourself and others by practicing good generator safety. This will help BECi linemen and personnel to restore power safely.

Safety Tip!

Never connect a portable generator directly to your building's electrical system. This can "back-feed" the utility electrical system energizing downed power lines setting up a very dangerous situation. Anyone who comes in contact with an energized, downed power line can be injured or even killed by the power from the portable generator. "Back-feeding" can even energize your neighbor's electrical service.