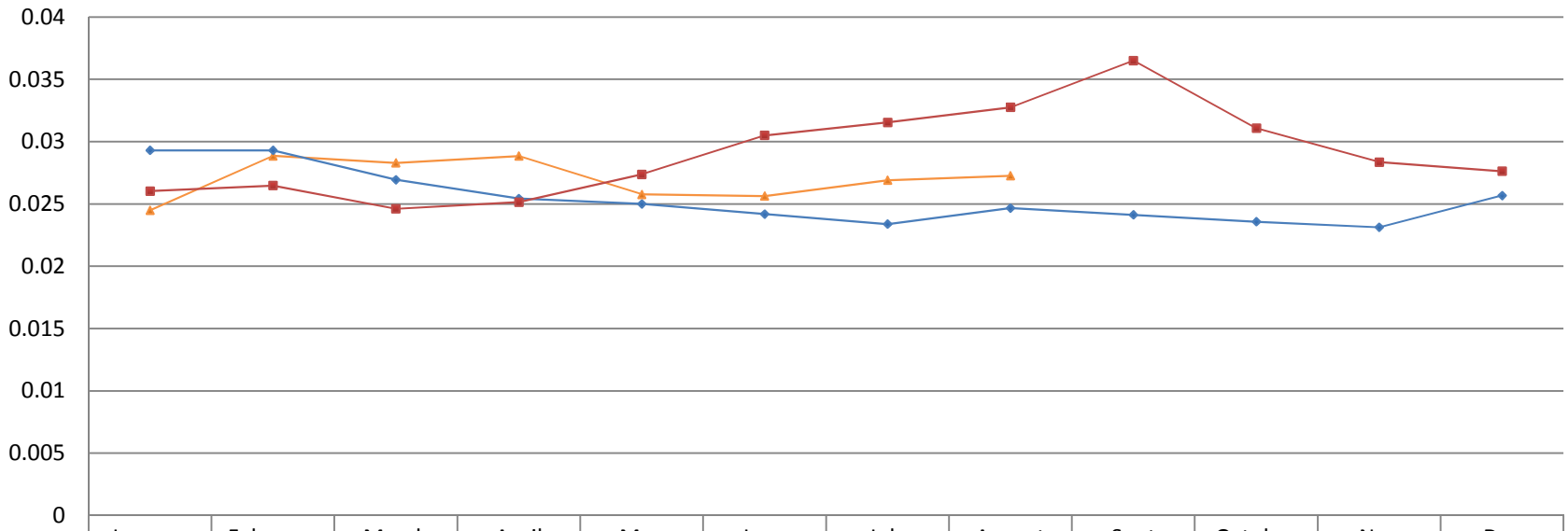


## BECi Fuel Rates



	January	February	March	April	May	June	July	August	Sept	October	Nov	Dec
—▲— 2010	0.0245	0.02887	0.02831	0.028855	0.02578	0.02565	0.02691	0.02727				
—◆— 2009	0.02931	0.02931	0.02695	0.02544	0.02501	0.0242	0.02339	0.02468	0.02414	0.02359	0.02314	0.02568
—■— 2008	0.02604	0.02648	0.02462	0.02516	0.02738	0.03051	0.03155	0.03276	0.03651	0.03109	0.02836	0.02764