

AVAILABLE COMMERCIAL SITE:

Stream Commercial Site



Size: 100 acres total – willing to divide

Location: 6 miles north of I-10 on US 171 Part of the Moss Bluff community

Utilities on site:

Electric: Beauregard Electric Co-op

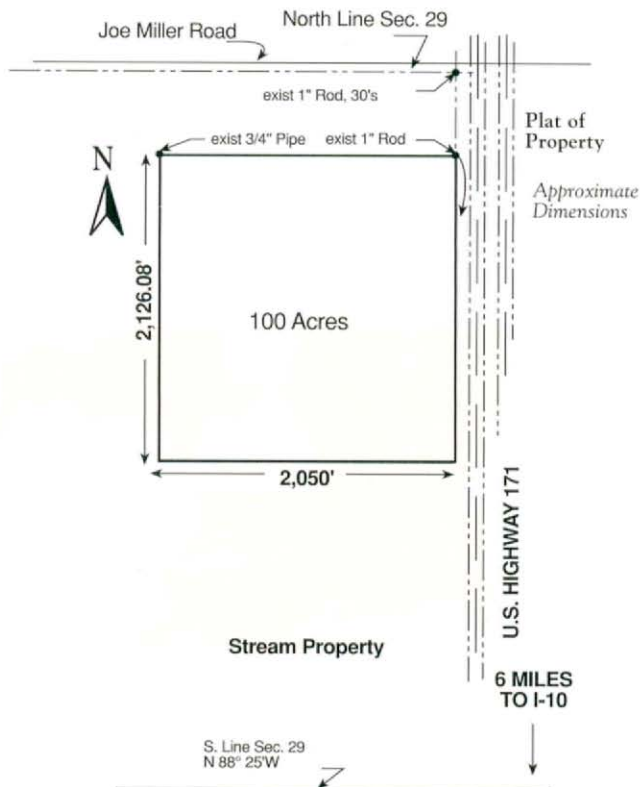
Water: Public Water District

Gas: City of Westlake

Sewer: None

Sale price: Negotiable

Comments: Site has over 2100 front feet on US Hwy 171 with a daily traffic count of 16,484 vehicles at this location. Population within a 10-mile radius is 93,507.



Contact:

Mike Harris, Director
Business Development
Beauregard Electric Cooperative Inc.
337-462-8330
mharris@beci.org