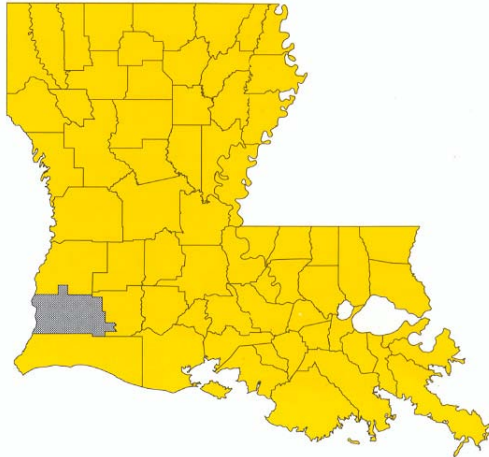


**AVAILABLE INDUSTRIAL SITE:**

**KCS Site, DeQuincy, LA**



**Size:** 80 Acres

**Location:** 1 mile west of DeQuincy on LA 12  
21 miles north of Interstate 10

**Utilities on site:**

Electric: Beauregard Electric Co-op

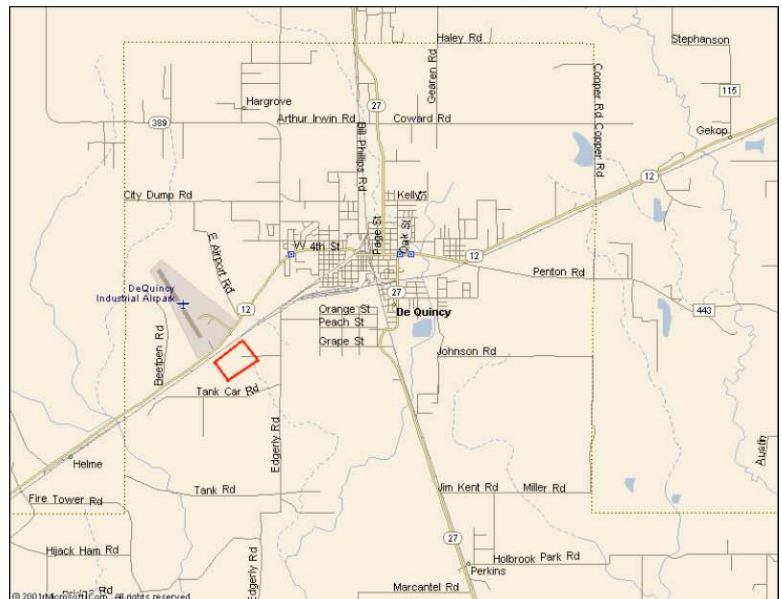
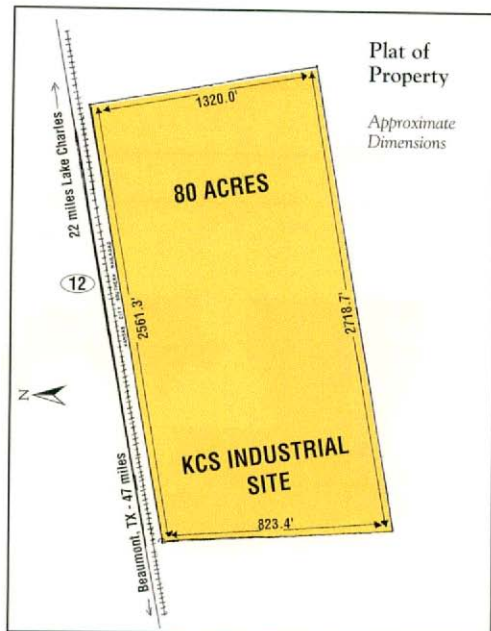
Water: Public Water District

Gas: City of DeQuincy

Sewer: City of DeQuincy

**Sale price:** Negotiable, depending on rail volume

**Comments:** Site is owned by the KCS railroad and has 2500' of rail frontage. The site is across the highway from the DeQuincy Industrial Airpark.



**Contact:**

Mike Harris, Director  
Business Development  
Beauregard Electric Cooperative Inc.  
337-462-8330  
mharris@beci.org